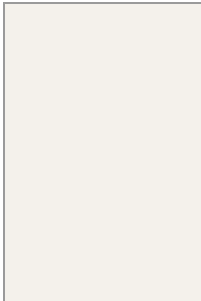
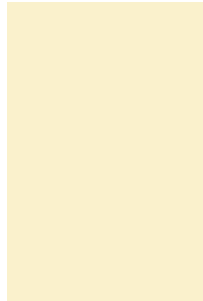


## A GUIDE TO LIFT FINISHES

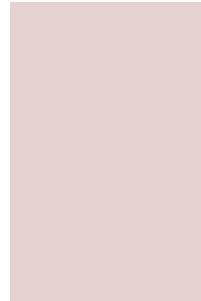
### Laminate Wall Finishes



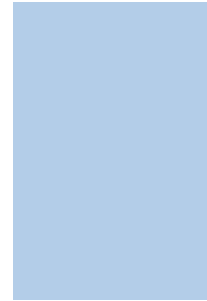
Colour 411



Colour 466



Colour 811



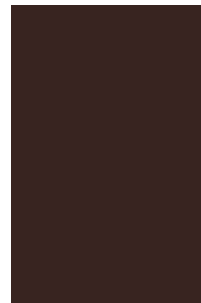
Colour 858



Colour 836



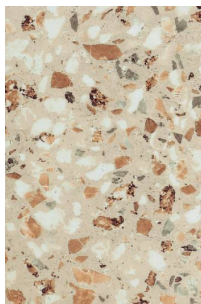
Colour 893



Colour 898



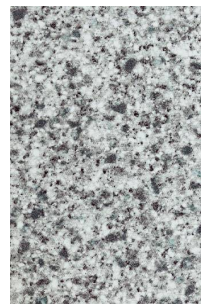
Colour 879



I Finti 968



I Finti 970



I Finti 988



Fiber 1032



Legni 1647



Legni 1667



Legni 600

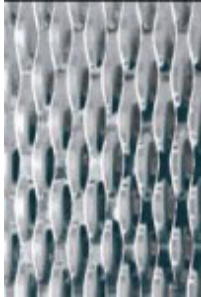


Legni 313

- Colour range is subject to availability
- Increased cost variations may apply
- Visit – [www.abet-laminati.it](http://www.abet-laminati.it) for the full range of Print HPL laminates

## A GUIDE TO LIFT FINISHES

### Stainless Steel Wall Finishes



5WL



Checkers



Cambridge



Scotchbrite



Hairline



Satin



Lino



Mirror

### SkinPlate Wall Finishes



P1 - white



P2 - light grey



P3 - beige



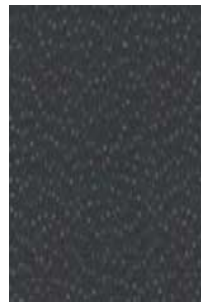
P4 - red



P5 - blue



P7 - wood grain



P8 - dark grey



P12 - st/st look alike

## A GUIDE TO LIFT FINISHES

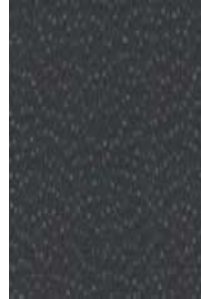
### Car Steel Profile Finishes



P1 - white



P2 - light grey



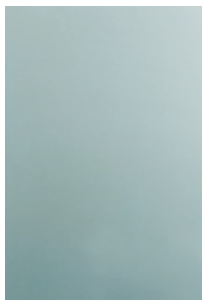
P8 - dark grey



P12 - st/st look alike



Scotchbrite S/S



Mirror S/S

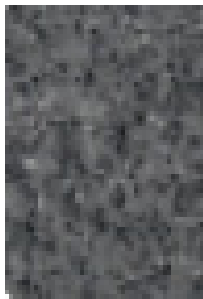


Hairline



Satin

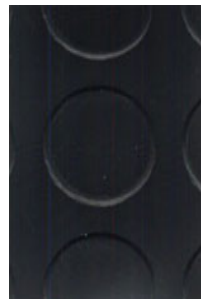
### Floor Finishes



V1



V2 - grey rubber studs



V3 - black rubber studs



Lino 3053



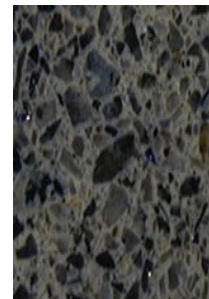
Lino 3048



Lino 3038



Granite 602



Granite 633